

Starting Monday, March 14, CPS will be moving to a **mask-optional** model for students and staff.

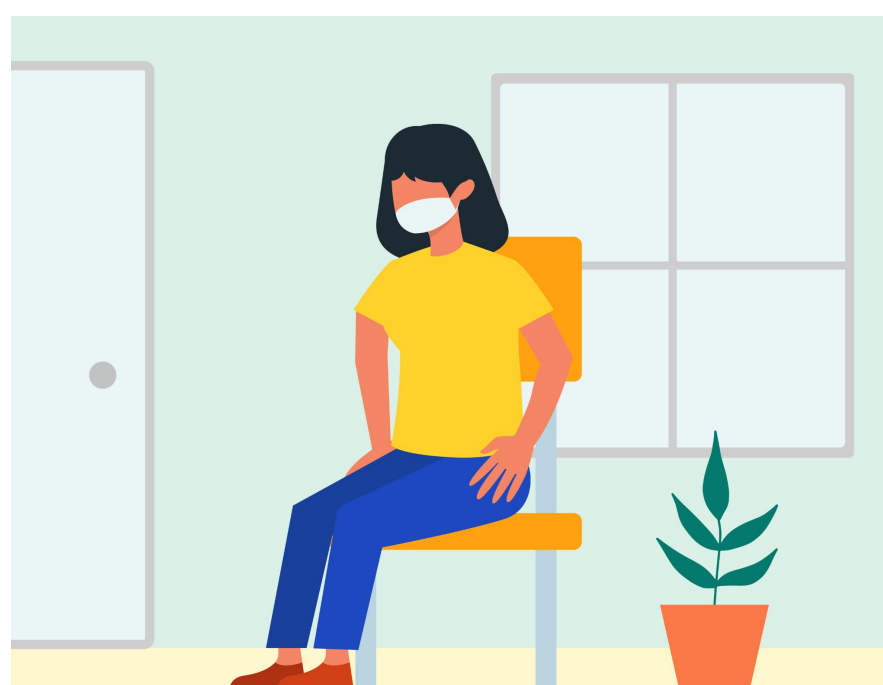
Mask-wearing will still be encouraged, but not required.

Some students and staff will choose – or need – to wear a mask. Other students and staff will choose not to wear a mask. Choosing whether or not to wear a mask can be a deeply personal decision, and it is important that all students and staff respect each other's choices about mask-wearing.

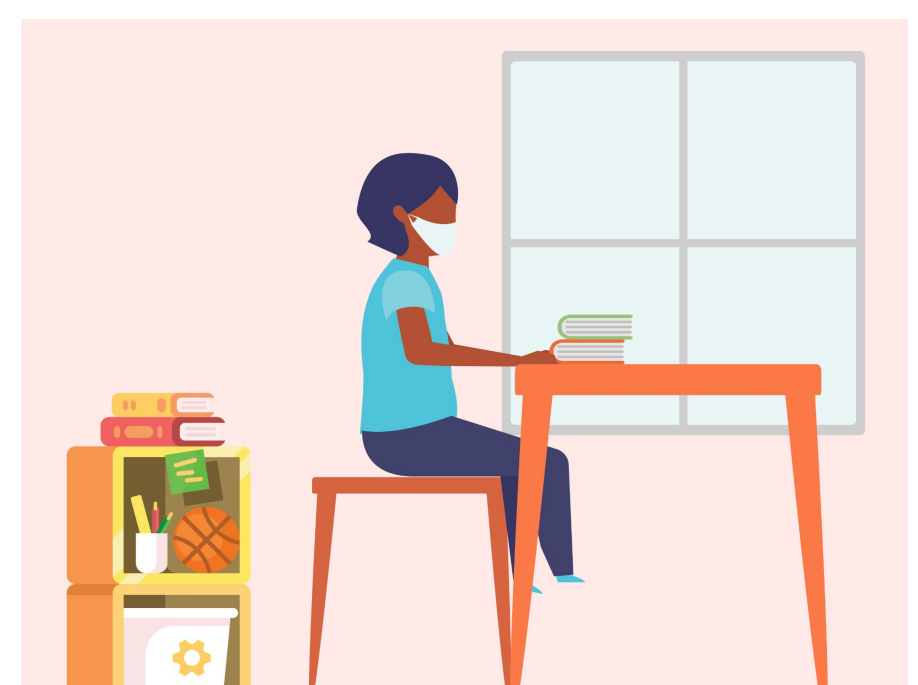
There are certain situations when masks will continue to be required in school:



When visiting with the school nurse or other medical professionals in school



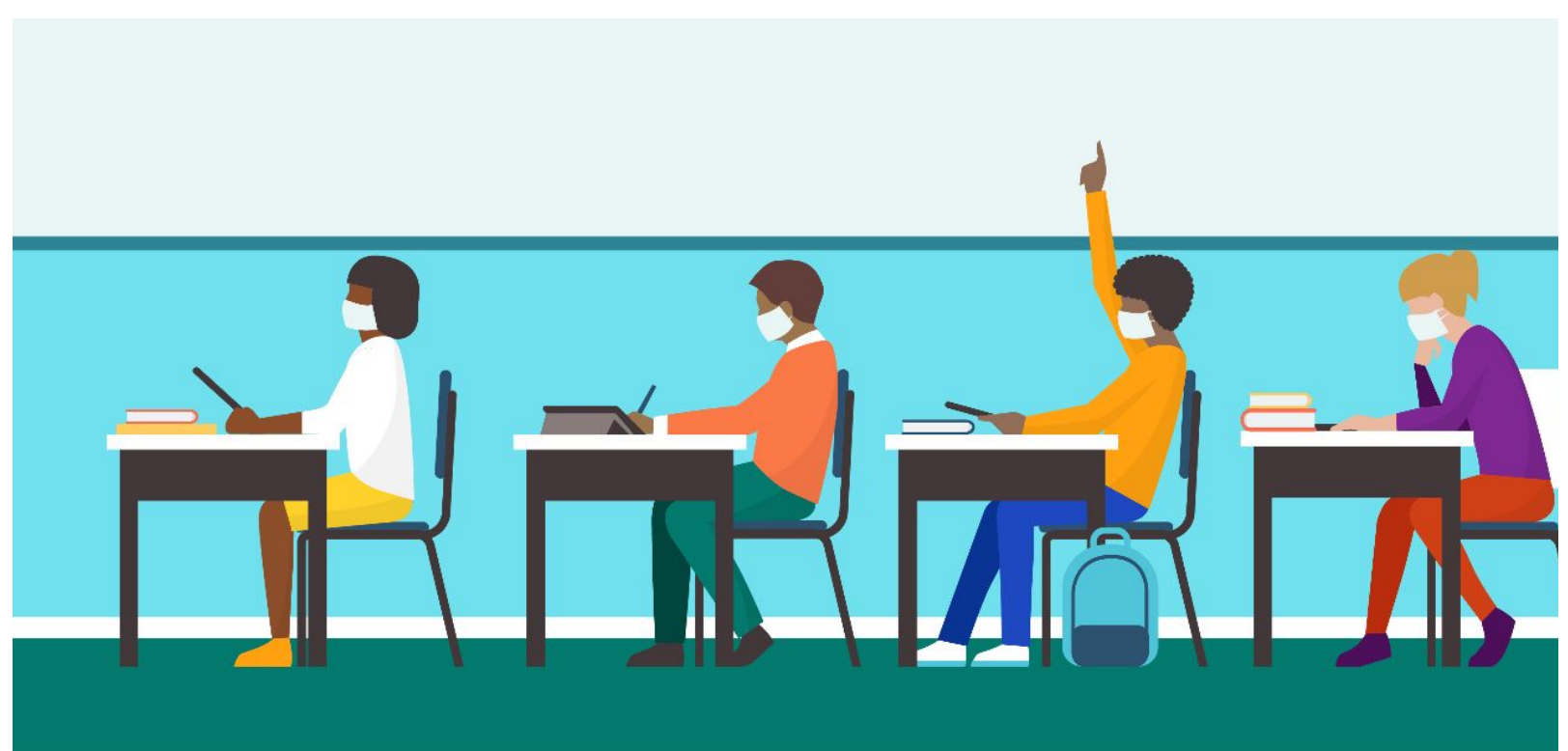
When an individual is exhibiting COVID-19 symptoms, including students visiting the school's Care Room



When an individual is exposed to someone with COVID-19, they must wear a mask for 10 days indoors after the date of exposure



When an individual is returning from five days of learning or working from home, they must wear a mask indoors for the next five days upon returning to school



At the direction of CDPH (Chicago Department of Public Health), an entire class may be required to wear masks

Students and staff are encouraged to continue social distancing, ensuring 6' between individuals when possible.

CPS may require masks again if community transmission reaches a moderate or high level.